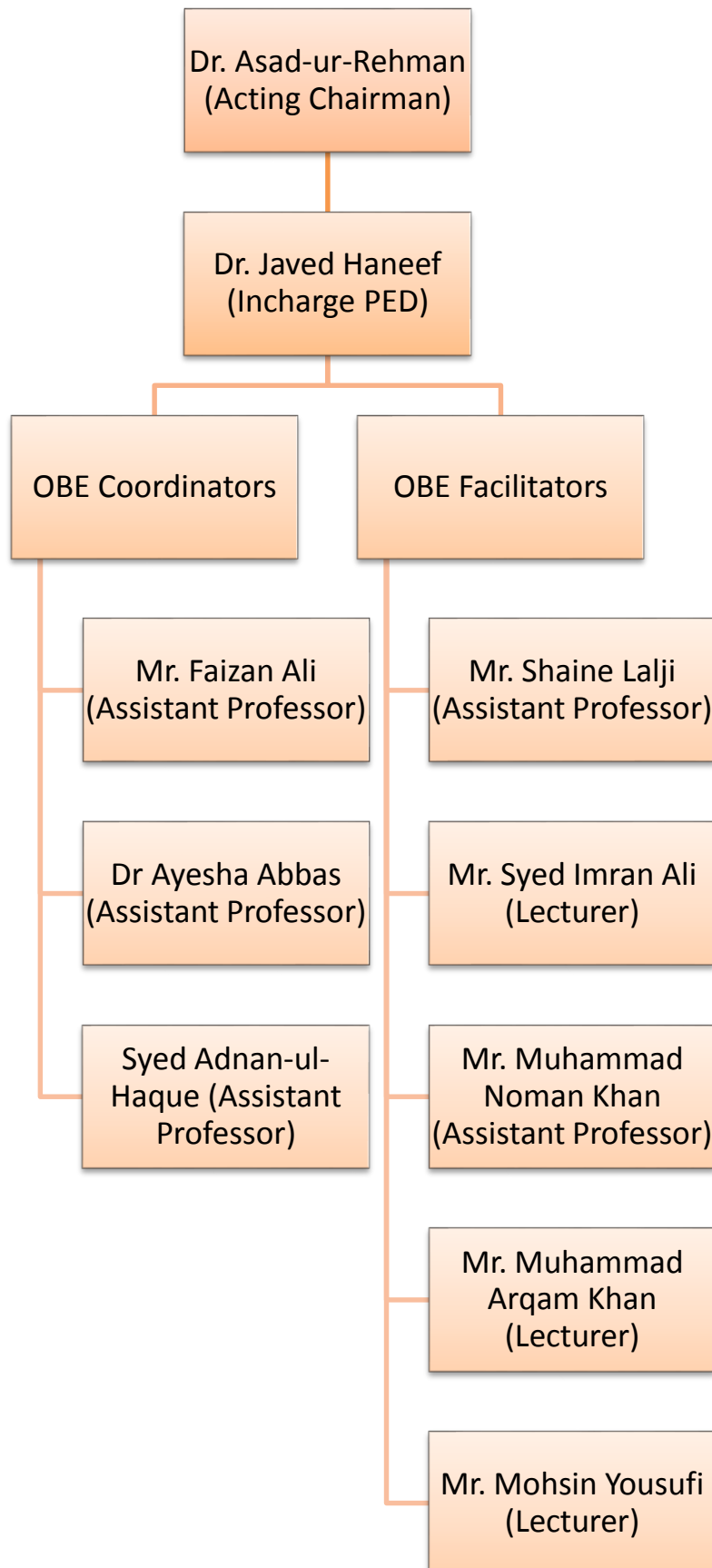


## DEPARTMENTAL OBE CELL (DOBEC)



## OBE TEAM TORs

- The Departmental OBE Team will monitor and ensure the execution and implementation of OBE System in the department at every level. They will assess the process and discuss any problems or discrepancies in regular OBE meetings.
- The Departmental OBE Team will also counsel and guide the teachers as well as the students so that the OBE system is implemented properly in the Department.
- The Departmental OBE Team will also work towards the Continuous improvement of the OBE System and suggest any changes which improve the performance of the OBE in the department. These changes may be implemented after approval through proper channel.
- OBE team will also ensure that all the required documentation related to OBE are kept up to date regularly.
- Regular meetings will be held to monitor the OBE implementation in the department.